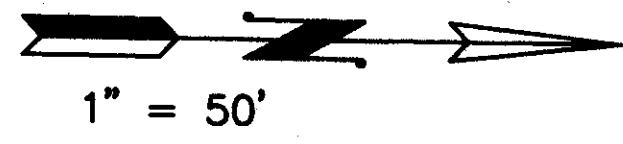


# TWIN LAKES P.U.D.

BEING A REPLAT OF A PORTION OF BLOCKS 79, 80, 81, 112, 113 AND ALL OF TRACTS 82, 111, AND 114 OF THE PLAT OF "THE PALM BEACH FARMS CO. PLAT NO. 8 OF SEC.30, T.45S., R.43E., PALM BEACH COUNTY, FLORIDA" AS RECORDED IN PLAT BOOK 5, PAGE 73 OF THE PUBLIC RECORDS OF PALM BEACH COUNTY, FLORIDA  
**IN PART OF SECTION 30, TOWNSHIP 45 SOUTH, RANGE 43 EAST**  
**PALM BEACH COUNTY, FLORIDA**

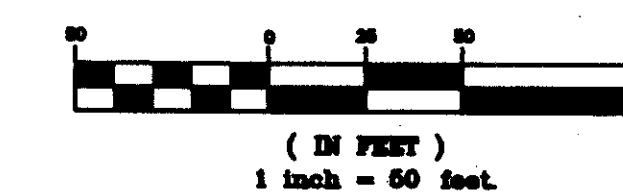
**SHEET NO. 3 OF 4**

0682-001



**32**

GRAPHIC SCALE



STATE OF FLORIDA  
 COUNTY OF PALM BEACH  
 This plat was filed for record at \_\_\_\_\_ M. this \_\_\_\_\_ day of \_\_\_\_\_ 1998 and duly recorded in Plat Book No. \_\_\_\_\_ on Pages \_\_\_\_\_ thru \_\_\_\_\_  
 DOROTHY H. WILKEN  
 Clerk Circuit Court  
 By \_\_\_\_\_ D. C.

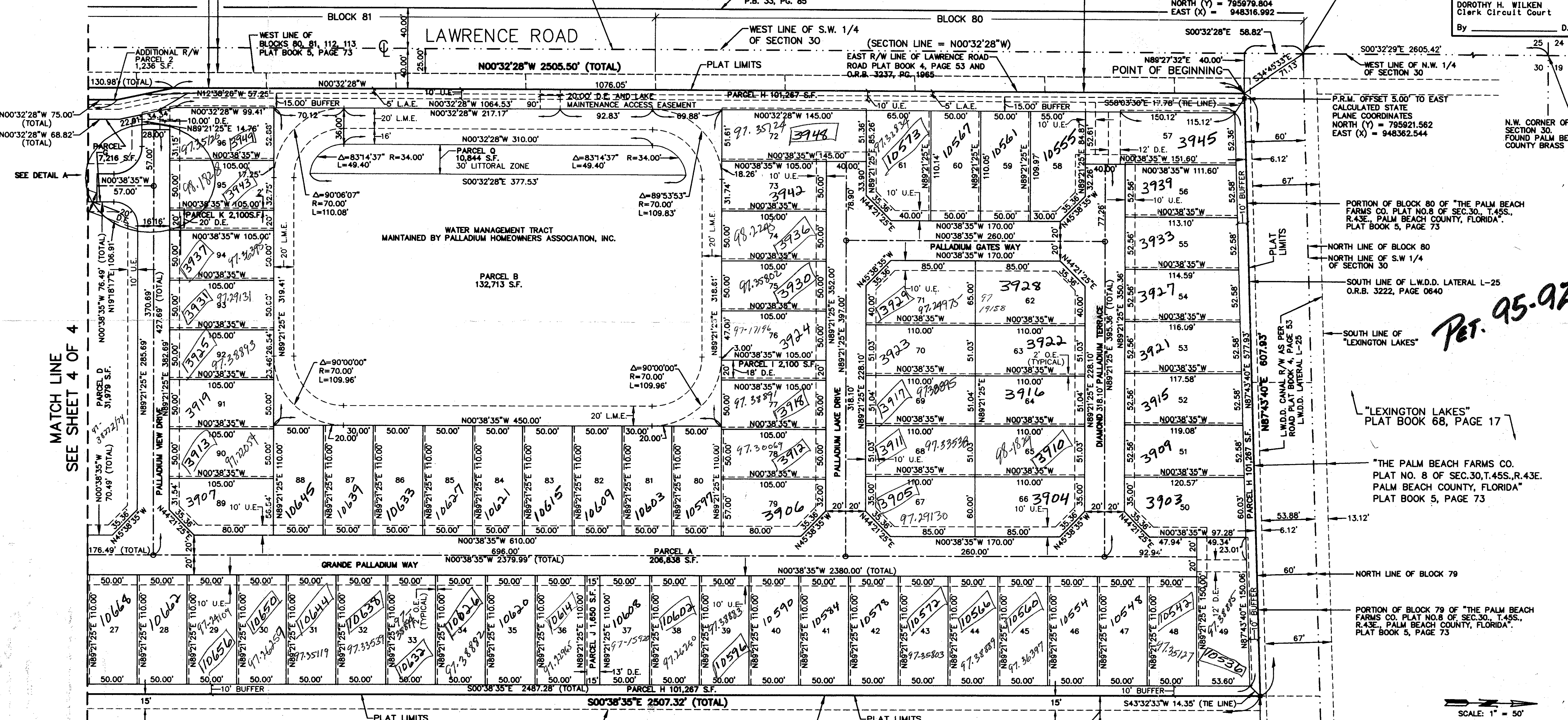
"THE PALM BEACH FARMS CO. PLAT NO. 8 OF SEC.30, T.45S., R.43E. PALM BEACH COUNTY, FLORIDA" PLAT BOOK 5, PAGE 73

"THE PALM BEACH FARMS CO. PLAT NO. 8 OF SEC.30, T.45S., R.43E. PALM BEACH COUNTY, FLORIDA" PLAT BOOK 5, PAGE 73

GEE & JENSON  
 ENGINEERS - ARCHITECTS - PLANNERS, INC.  
 WEST PALM BEACH, FLORIDA  
 MARCH 1998

"THE PALM BEACH FARMS CO. PLAT NO. 8 OF SEC.30, T.45S., R.43E. PALM BEACH COUNTY, FLORIDA" PLAT BOOK 5, PAGE 73

POINT OF COMMENCEMENT  
 N.W. CORNER OF SW 1/4 OF SECTION 30, TOWNSHIP 45 SOUTH, RANGE 43 EAST, PALM BEACH COUNTY, FLORIDA  
 FOUND PALM BEACH COUNTY BRASS DISK PUBLISHED STATE PLANE COORDINATES  
 NORTH (Y) = 795979.804  
 EAST (X) = 948316.992



MATCH LINE SEE SHEET 4 OF 4

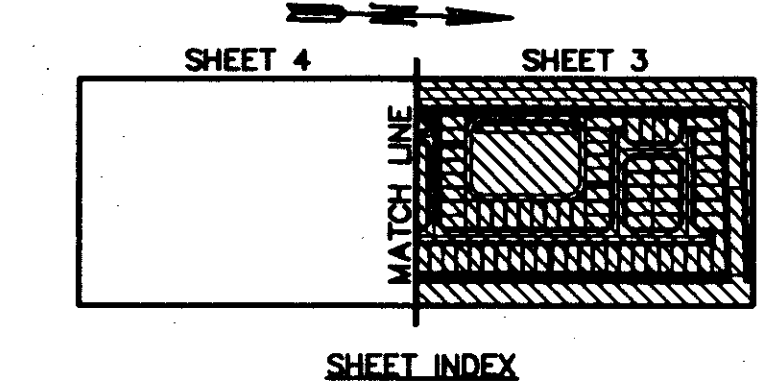
*PET. 95-92*

Last Update: 11/14/1998 Plotted: 12/3/1998 9:45 am By: HOKAN Plot Scale: 1"=50.0 Xref Dwg's:

SUBDIVISION \* TWIN LAKES  
 BOOK 79 PAGE 32  
 FLOOD ZONE S-A-H FLOOD MAP # 198-B  
 ZONING AR  
 QUAD # 20  
 ZIP CODE 33424  
 PUD NAME TWIN LAKES

COMPUTED \_\_\_\_\_  
 DRAWN MKH  
 CHECKED \_\_\_\_\_  
 APPROVED \_\_\_\_\_  
 JOB NO. 95-243.20

THIS INSTRUMENT PREPARED BY:  
 JAMES A. DAVIS, PLS  
 FOR GEE & JENSON, ENGINEERS - ARCHITECTS - PLANNERS, INC.  
 ONE HARVARD CIRCLE  
 WEST PALM BEACH, FLORIDA 33409-1923



NOTE: ALL LOT LINES ARE NON-RADIAL UNLESS OTHERWISE NOTED.

0682-001

DETAIL A  
 79/32